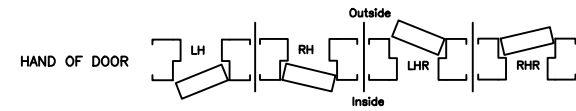


WEILAND FIBERGLASS PERSONNEL DOOR

Door		W.I.C.	
Quantity		H.I.C.	
Swing		Wall Thickness	



Frame Details

- Frame Type:**
 4" Molded Fiberglass Frame: ___ 16-GA. SS 304-4 Brushed Two-Part Frame ___
 5 3/4" 16-GA. SS 304-4 Brushed Standard Frame: ___ Foam Filled: ___
- Hinges:**
 3 SS Standard Weight 4 1/2" x 4 1/2" Hinges: ___
- Gaskets:**
 Door Silencers: ___ Silicone Smoke/Weatherseal-NGP 5050C: ___
 Jamb Mounted Gasket W/ SS Retainer: ___ Jamb Mounted Gasket W/ Alum. Retainer: ___

Door Details

- Door Panel:**
 1-3/4" Molded Fiberglass Door: ___
- Closer:**
 HD SS Closer W/ Plastic Cover: ___ HD Aluminum Closer W/ Plastic Cover: ___
 SS Cover Upgrade: ___
- Vision Panel:**
 SS Vision Panel:
 5" x 20": ___ 12" x 18": ___ 20" x 32": ___
 1/4" Scratch Resistant Polycarbonate: ___ Clear Tempered Insulate Glass, Argon Filled: ___
 Safety Film: Yes / No
 Fiberglass Flush 20" x 30" x 3/8" Polycarbonate Vision Panel: ___
- Exit/Entry:**
 SS Push/Pull Set: ___
 DORMA CYLINDRICAL LEVER: Passage Lever: ___ Lever Lockset: ___
 DORMA MORTISE LEVER: Passage Lever: ___ Lever Lockset: ___
 SS HD DORMA PANIC BAR: Exit Only: ___ Passage Lever: ___ Lever Lockset: ___
 ALUM. DORMA PANIC BAR: Exit Only: ___ Passage Trim: ___ Lockset Trim: ___
- Kick Plate:** SS 304-4 Brushed
 9" Tall: ___ 12" Tall: ___ Push Side: ___ Pull Side: ___ Both Sides: ___
- Sweep:**
 Neoprene Sweep Gasket W/ SS Retainer: ___ Neoprene Sweep Gasket W/ Alum. Retainer: ___
- Threshold:**
 Stainless Steel Threshold: ___ HDPE Threshold: ___ Fiberglass Threshold: ___
 Aluminum Threshold: ___ Thermally Broken Aluminum Threshold: ___
- MISC:**
 SS Drip Cap: ___ Wall Stop: ___ Floor Stop: ___
 Other: _____

USDA Compliant: Yes

Approved Approved, as noted

CAUTION

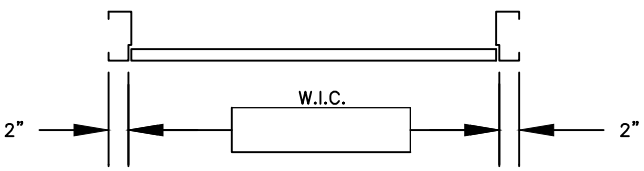
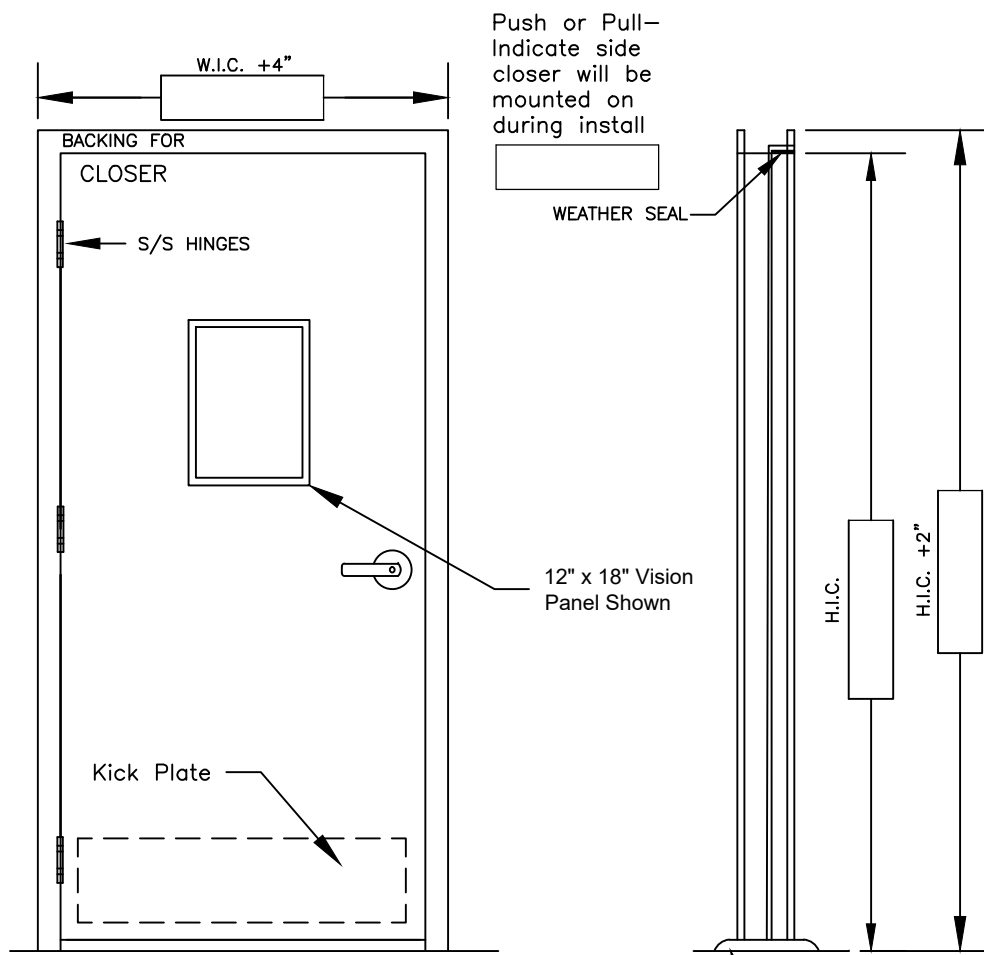
This shop drawing will be used during the manufacturing process, as approved. Weiland, Inc. has made every effort to interpret your requirements accurately, as reflected in this drawing. Your products will be built in accordance with this drawing and invoiced as such. Additional costs may be incurred to make changes once production has begun. If an error exists, make changes accordingly and return to Weiland, Inc. for corrections. Weiland, Inc. holds no responsibility for approved shop drawings with errors. By Signing the "Approved" box, you are approving the production specifications.

Signature: _____

Date: _____



RH/LHR Shown - LH/RHR Mirror Image



<p>FIBERGLASS FRAME <input type="checkbox"/></p> <p>3/16"</p> <p>DOOR</p> <p>4"</p> <p>.1875"</p> <p>BUCK OPENING W.I.C. + 4 1/2" H.I.C. + 2 1/4"</p>	<p>TWO PART FRAME <input type="checkbox"/></p> <p>SECTION 1</p> <p>2"</p> <p>11/16"</p> <p>DOOR</p> <p>Wall Thickness</p> <p>S/S SCREWS</p> <p>CAULK JOINT</p> <p>SECTION 2</p> <p>BLOCKING</p> <p>S/S SCREWS</p> <p>1/2"</p> <p>BUCK OPENING W.I.C. + 1" H.I.C. + 1/2"</p>	<p>STANDARD FRAME <input type="checkbox"/></p> <p>2"</p> <p>DOOR</p> <p>16 GA.</p> <p>5 3/4"</p> <p>BUCK OPENING W.I.C. + 4 1/2" H.I.C. + 2 1/4"</p>
--	--	---