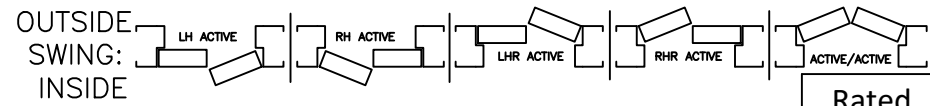


WEILAND RATED DOUBLE PERSONNEL DOOR

Door		W.I.C.	
Quantity		H.I.C.	
Swing:		Wall Thickness	



Rated
MIN

Frame Details

- Frame Type:**
5 3/4" 16-GA. SS 304-4 Brushed Standard Frame: _____
- Hinges:**
3 SS Heavy Weight 4 1/2" x 4 1/2" Hinges: _____
- Gaskets:**
Door Silencers: _____
Silicone Smoke/Weatherseal-NGP 5050C: _____
Jamb Mounted Gasket W/ SS Retainer: _____

Door Details

- Door Panel:**
1-3/4" SS 16 GA. 304-4 Brushed Door: _____
- Closer:**
HD SS Closer W/ Plastic Cover: _____ SS Cover Upgrade: _____
- Vision Panel:**
SS Vision Panel:
5" x 20": _____ 10" x 10": _____
1/4" UL Wire Safety Glass: _____
1/4" UL Ceramic Glass: _____
Safety Film: Yes / No

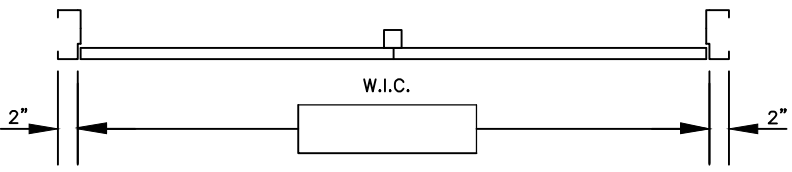
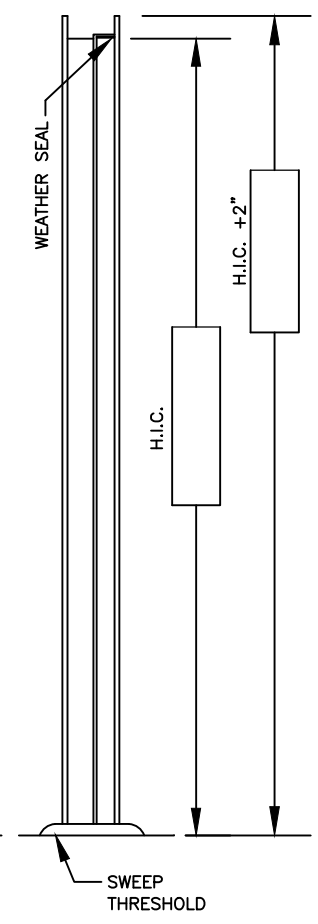
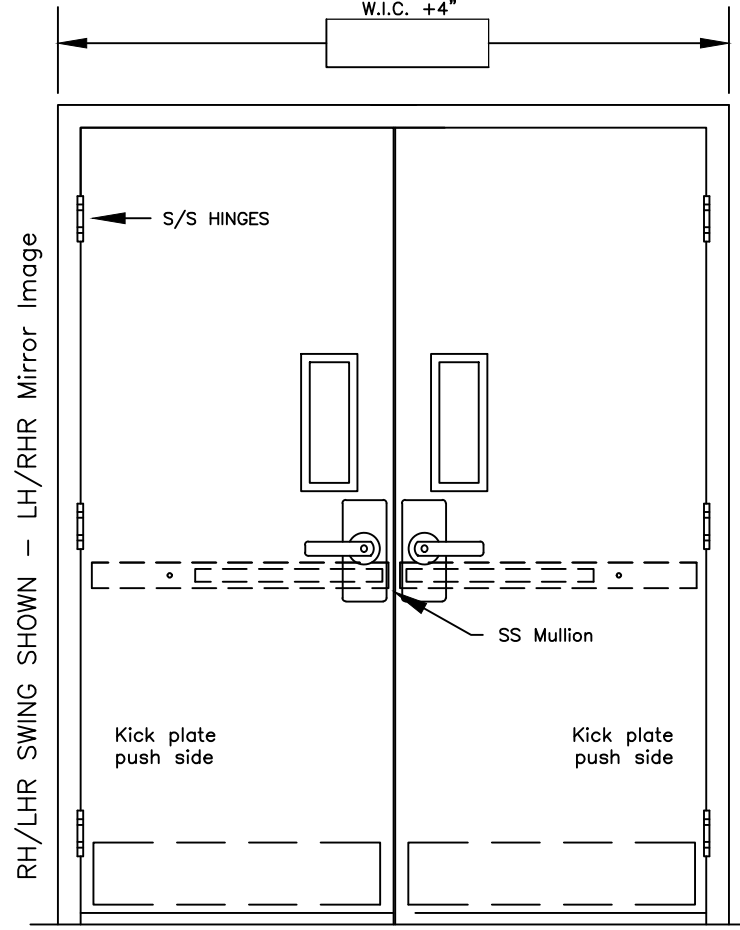
- Exit/Entry:**
SS Push/Pull Set: _____
DORMA CYLINDRICAL LEVER: Passage Lever: _____ Lever Lockset: _____
DORMA MORTISE LEVER: Passage Lever: _____ Lever Lockset: _____
SS HD DORMA PANIC BAR: Exit Only: _____ Passage Lever: _____ Lever Lockset: _____

- Kick Plate:** SS 304-4 Brushed
9" Tall: _____ 12" Tall: _____ Push Side: _____ Pull Side: _____ Both Sides: _____

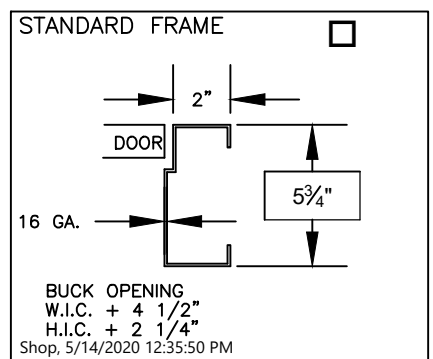
- Sweep:**
Neoprene Sweep Gasket W/ SS Retainer: _____

- Threshold:**
Fire Rated SS Threshold: _____
Thermally Broken Aluminum Threshold: _____
Aluminum Threshold: _____

- MISC:**
SS Drip Cap: _____ Wall Stop: _____ Floor Stop: _____
Other: _____ **USDA Compliant:** Yes



Push or Pull - Indicate side closer will be mounted on during install



CAUTION

This shop drawing will be used during the manufacturing process, as approved. Weiland, Inc. has made every effort to interpret your requirements accurately, as reflected in this drawing. Your products will be built in accordance with this drawing and invoiced as such. Additional costs may be incurred to make changes once production has begun. If an error exists, make changes accordingly and return to Weiland, Inc. for corrections. Weiland, Inc. holds no responsibility for approved shop drawings with errors. By Signing the "Approved" box, you are approving the production specifications.

Approved Approved, as noted

Signature: _____

Date: _____