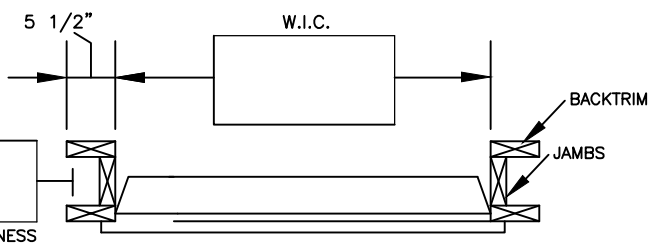
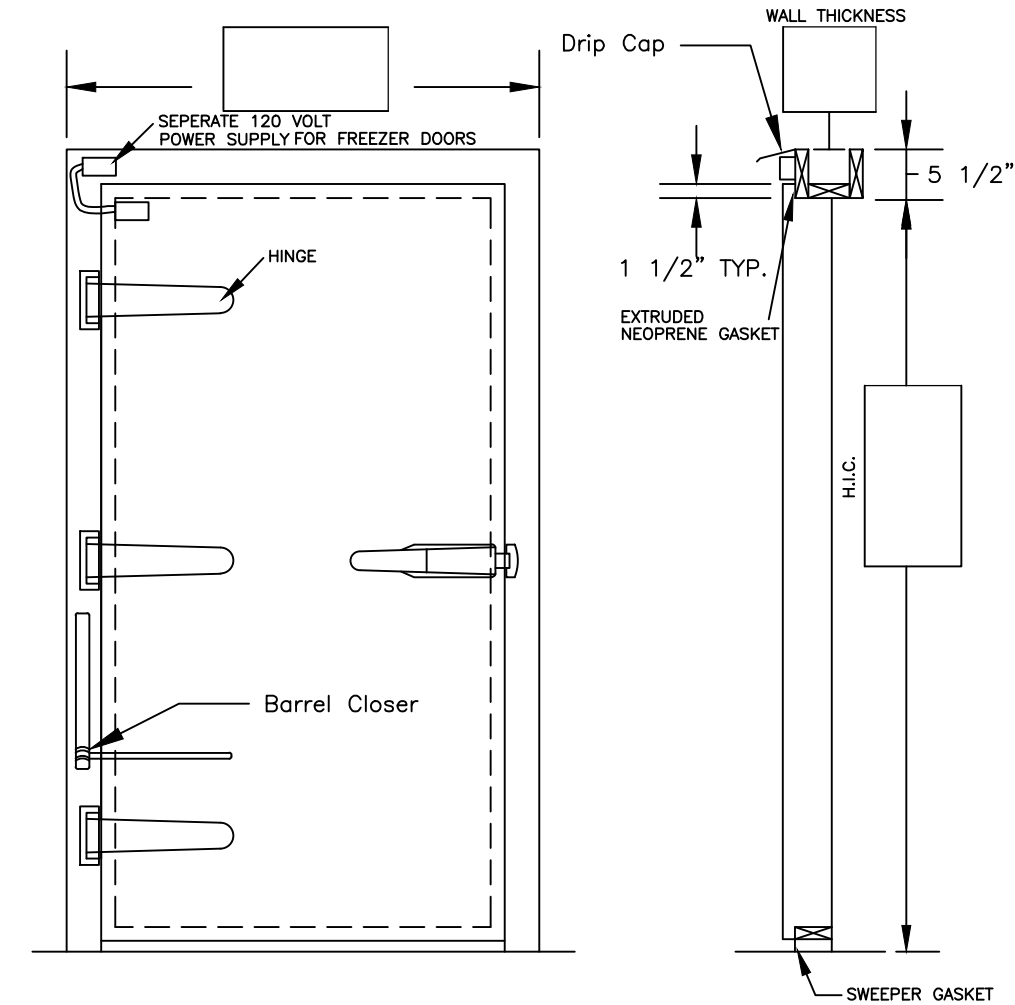


LHR SWING SHOWN - RHR SWING IS MIRROR IMAGE OF DRAWING



WEILAND INFITTING HINGED DOOR

Door		W.I.C.	
Quantity		H.I.C.	
Swing		Wall Thickness	

Swing Direction: LHR (AS SHOWN) RHR (MIRRORED IMAGE)

Frame Details

Casing Type:
 16 Ga. 304-4 Brushed Stainless Steel: _____ 24 Ga. 304-4 Brushed Stainless Steel: _____
 26 Ga White Painted Stucco Finish: _____

Sill Type:
 Flush Sill: _____ Modified Sill: _____ High Sill 1: _____ High Sill 2: _____ Mod. Flush Sill: _____

Hinges:
 3 Stainless Steel Cam Rise Hinges: _____ 3 Polished Aluminum Cam Rise Hinges: _____
 Pilfer Proof Fasteners: _____

Temperature:
 Interior: _____ Exterior: _____

Door Details

Door Panel:
 4" Molded Fiberglass: _____
 4" 16 Ga. 304-4 Brushed Stainless Steel: _____ 6" 16 Ga. 304-4 Brushed Stainless Steel: _____
 4" 20 Ga. 304-4 Brushed Stainless Steel: _____ 6" 20 Ga. 304-4 Brushed Stainless Steel: _____
 4" 26 Ga. White Stucco Embossed Galv.: _____ 6" 26 Ga. White Stucco Embossed Galv.: _____

Closer:
 Stainless Steel Barrel Closer: _____

Vision Panel:
 10" x 10": _____
 1/2" Scratch Resistant Polycarbonate: _____
 Clear Tempered Insulated Glass, Argon Filled: _____
 Clear Tempered Insulated Glass, Heated: _____
 Safety Film: Yes / No

Exit/Entry:
 SS Kason Padlockable Latch w/ Inside Safety Release: _____
 Stainless Steel Bump Bar: _____
 Chrome Kason Padlockable Latch w/ Inside Safety Release: _____
 Stainless Steel Bump Bar: _____
 SS HD DORMA PANIC BAR: Exit Only: _____ Passage Lever: _____ Lever Lockset: _____
 Painted DORMA PANIC BAR: Exit Only: _____ Passage Trim: _____ Lockset Trim: _____

Kick Plate: SS 304-4 Brushed
 9" Tall: _____ 36" Tall: _____ Push Side: _____ Pull Side: _____ Both Sides: _____

MISC:
 SS Drip Cap: _____ Galv. Drip Cap: _____ SS Threshold: _____
 Other: _____

USDA Compliant: Yes

Approved Approved, as noted

Signature: _____

Date: _____

Flush Sill <input type="checkbox"/>	Mod. Flush <input type="checkbox"/>	High Sill 1 <input type="checkbox"/>	High Sill 2 <input type="checkbox"/>	Mod. High Sill <input type="checkbox"/>
Buck Opening W/ Jamba W.I.C. + 4" H.I.C. + 2" Buck Openings W/O Jamba W.I.C. + 0" H.I.C. + 0"	Buck Opening W/ Jamba W.I.C. + 4" H.I.C. + 2" Buck Openings W/O Jamba W.I.C. + 0" H.I.C. + 0"	Buck Opening W/ Jamba W.I.C. + 4" H.I.C. + 2" Buck Openings W/O Jamba W.I.C. + 0" H.I.C. + 0"	Buck Opening W/ Jamba W.I.C. + 4" H.I.C. + 2" Buck Openings W/O Jamba W.I.C. + 0" H.I.C. + 0"	Buck Opening W/ Jamba W.I.C. + 4" H.I.C. + 2" Buck Openings W/O Jamba W.I.C. + 0" H.I.C. + 0"



WEILAND