



ITEM # 56 **NSF®**

56 SAFEGUARD® LATCH

- Bolt-type tongue provides positive locking action.
- Proven, heavy-duty construction outlasts similar latches in hard commercial use.
- Patented Kason adjustable strike assures precise adjustment.
- Padlocking provision standard on all models.
- Accepts Kason inside release lever to prevent accidental entrapment in locked walk-ins.
- Inside lever releases cylinder-locked or padlocked door.
- Unsurpassed for long life and reliability.

SPECIFICATIONS

MATERIAL:
High pressure die-cast zinc body and strike housing, malleable iron handle.

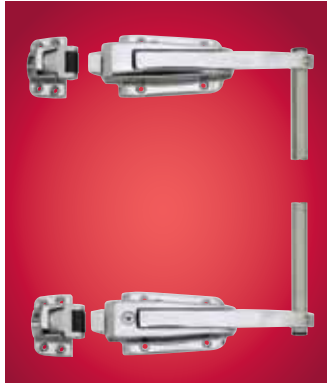
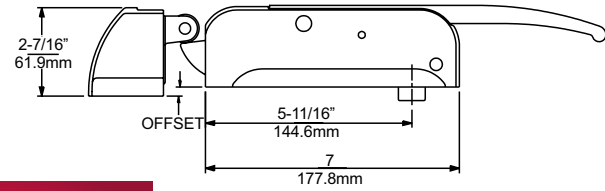
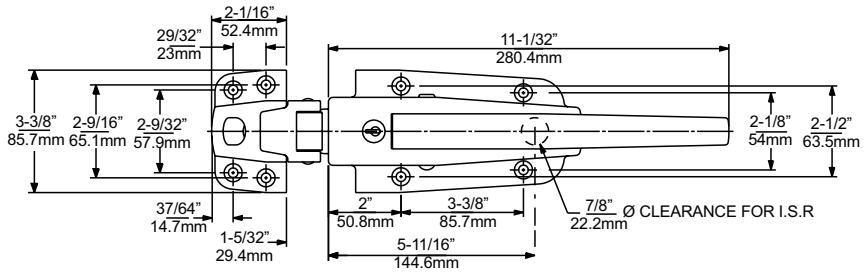
FINISH:
See ordering information. Powder coat finishes available for use in extreme environmental conditions. Request information.

MOUNTING:
Holes drilled and countersunk for 1/4" (6.0mm) screws.

PACKAGING/WEIGHT:
6 body assemblies per carton/approx. 30 lb. (14kg) per carton.

6 strike assemblies per carton/ approx. 10 lb. (4.5kg) per carton.

INSIDE RELEASE:
Order separately.



ITEM # 5656

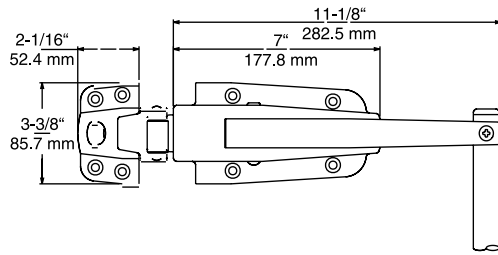
5656 TWO-POINT LOCKING LATCH

Two No. 56 latches with stainless steel connecting rod. Lower latch is cylinder locking. Rod is 7/8" (22.2mm) diameter and 37-1/4" (946.2mm) long. Latch has all the features of No. 56 latch.

SPECIFICATIONS

PACKAGING/WEIGHT:
1 per carton/approx... 13 lb. (5.9 kg).

PathoGuard™ treated antimicrobial handles available. Consult your Kason representative.



56 SERIES ORDERING INFORMATION

Model No.	Item	Description	Finish
0056CH5020	Cylinder Locking Body	Heavy Spring	Polished Chrome
0056CH6021	Cylinder Locking Body	Heavy Spring	Brushed Chrome
0056CH0086	Cylinder Locking Body	Heavy Spring	Tuffkote
0056CL5020	Cylinder Locking Body	Light Spring	Polished Chrome
0056CL6021	Cylinder Locking Body	Light Spring	Brushed Chrome
0056CL0086	Cylinder Locking Body	Light Spring	Tuffkote
0056CX5020	Cylinder Locking Body	X-Light Spring	Polished Chrome
0056H05020	Padlocking Body	Heavy Spring	Polished Chrome
0056H06021	Padlocking Body	Heavy Spring	Brushed Chrome
0056L05020	Padlocking Body	Light Spring	Polished Chrome
0056L06021	Padlocking Body	Light Spring	Brushed Chrome
0056L00086	Padlocking Body	Light Spring	Tuffkote
0056XL5020	Padlocking Body	X-Light Spring	Polished Chrome
0056XL6020	Padlocking Body	X-Light Spring	Brushed Chrome
0056XL0086	Padlocking Body	X-Light Spring	Tuffkote
0056005002	Strike	-1/8" to 1/4" (-3.2 to 6.4 mm)	Polished Chrome
0056005003	Strike	3/4" to 1-1/2" (19.0 to 38.1 mm)	Polished Chrome
0056005005	Strike	1-3/4" to 2-1/2" (44.5 to 63.5 mm)	Polished Chrome
0056005008	Strike	3" to 4" (76.2 to 101.6 mm)	Polished Chrome
0056006002	Strike	-1/8" to 1/4" (-3.2 to 6.4 mm)	Brushed Chrome
0056006003	Strike	3/4" to 1-1/2" (19.0 to 38.1 mm)	Brushed Chrome
0056006005	Strike	1-3/4" to 2-1/2" (44.5 to 63.5 mm)	Brushed Chrome
0056006008	Strike	3" to 4" (76.2 to 101.6 mm)	Brushed Chrome
005600T002	Strike	-1/8" to 1/4" (-3.2 to 6.4 mm)	Tuffkote
005600T003	Strike	3/4" to 1-1/2" (19.0 to 38.1 mm)	Tuffkote
005600T005	Strike	1-3/4" to 2-1/2" (44.5 to 63.5 mm)	Tuffkote
005600T008	Strike	3" to 4" (76.2 to 101.6 mm)	Tuffkote
0056CM0004	Cylinder Kit for 56C models.		

Cylinder locks may be keyed alike or differently; 5 key changes available. Please specify.

Model No.	Item	Description	Finish
5656CL0004	Cylinder Locking Two Point Latch	-1/8" to 1/4" (-3.2 to 6.4 mm)	Polished Chrome
5656L00004	Padlocking Two Point Latch	-1/8" to 1/4" (-3.2 to 6.4 mm)	Polished Chrome

