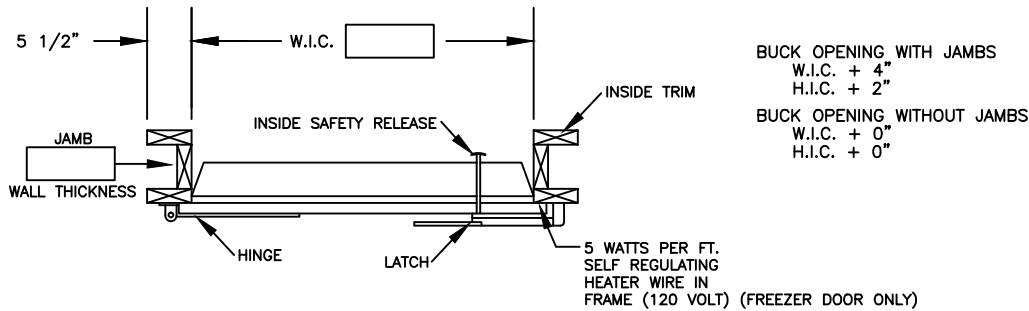
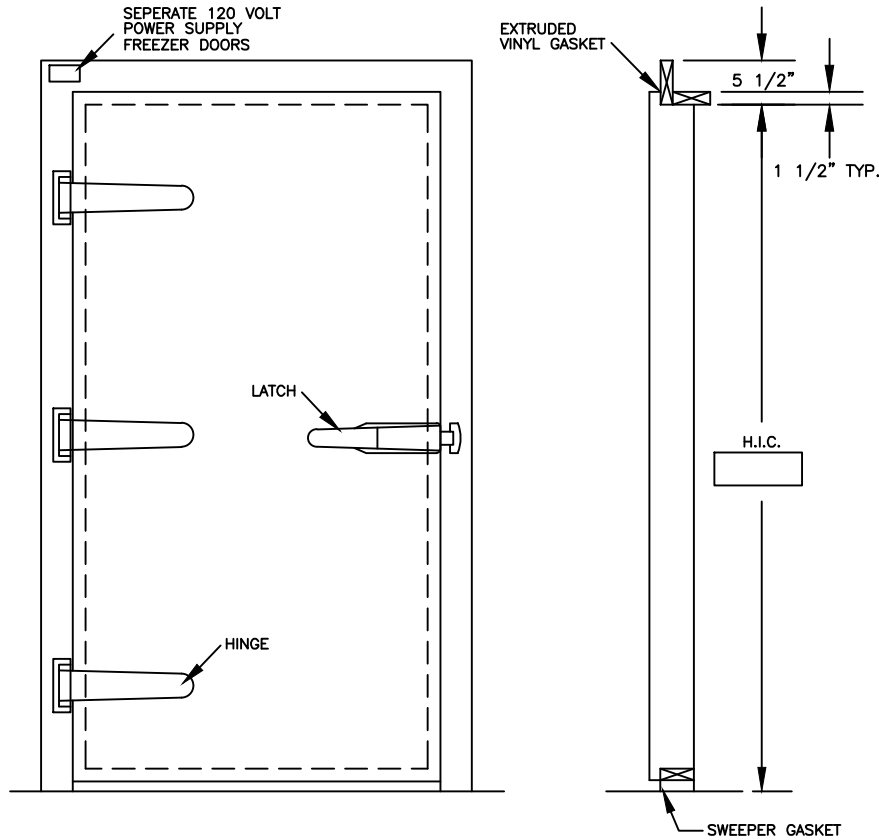


Enter Customer & PO#

# WEILAND INFITTING HINGED DOOR



DOOR NO.  DOOR QUANTITY  DOOR SIZE: W.I.C.   
 H.I.C.

SWING: LEFT HAND (SHOWN)  RIGHT HAND (MIRROR IMAGE)

1. DOOR PANEL: F.I.P. POLYURETHANE INSULATION CORE
- 3" Thick Door
  - 4" Thick Door
  - 5" Thick Door
  - 6" Thick Door

COOLER  FREEZER  INDUSTRIAL

2. DOOR
- A. MOLDED FIBERGLASS (WHITE)
  - B. WHITE STUCCO EMBOSSED GALV.
  - C. MILL FINISH GALV.
  - D. STAINLESS STEEL

3. DOOR CASEMENTS
- A. WHITE STUCCO EMBOSSED GALV.
  - B. MILL FIN. GALV.
  - C. STAINLESS STEEL

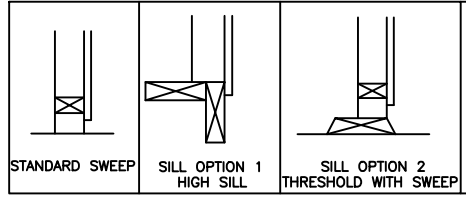
4. DOOR TRIM
- A. GALVANIZED STEEL
  - B. STAINLESS STEEL

5. OPTIONS
- A. HEATER CABLE-FREEZER DOOR (4 SIDES)
  - B. JAMBS
  - JAMB DEPTH
  - C. INSIDE TRIM (1 1/2" X 5 1/2" STD.)
  - D. SILL OPTION 1 (HIGH SILL)
  - E. SILL OPTION 2 (THRESHOLD WITH SWEEP)
  - F. KICK PLATE

GALVANIZED STEEL  STAINLESS STEEL   
 STD. HEIGHT 12"  18"  24"  36"   
 ONE SIDE  TWO SIDES   
 G. LOCKING DEVICE   
 H. VISION PANEL (1/2" INSULATED GLASS)   
 (1/2" POLYCARBONATE)   
 SIZE 12" X 18"  HEATED

- I. HYDRAULIC CLOSER
- J. SPRING TENSION BARREL CLOSER
- K. PANIC BAR WITH EXTERIOR ACCESS
- L. PANIC BAR WITHOUT EXTERIOR ACCESS
- M. U.S.D.A. APPROVAL

CHANGES, REMARKS, ETC. \_\_\_\_\_



WEILAND INFITTING HINGED DOORS include door panel, casings covered with 26 ga. metal in any of several coverings which include mill finished galvanized steel, aluminum, or stainless steel, F.I.P. polyurethane insulation core, vinyl gaskets, hinges and latch have corrosion resistant coatings, all exposed seams sealed, padlock provided with safety release, 120 volt self regulating heater cable in freezer doors.

**Weiland**  
 INFITTING HINGED DOOR

WEILAND INC.  
 55242 HIGHWAY 32  
 MADISON, NE 68748-6136  
 (402) 454-2106  
 www.weilanddoors.com

APPROVED BY \_\_\_\_\_  
 DATE \_\_\_\_\_