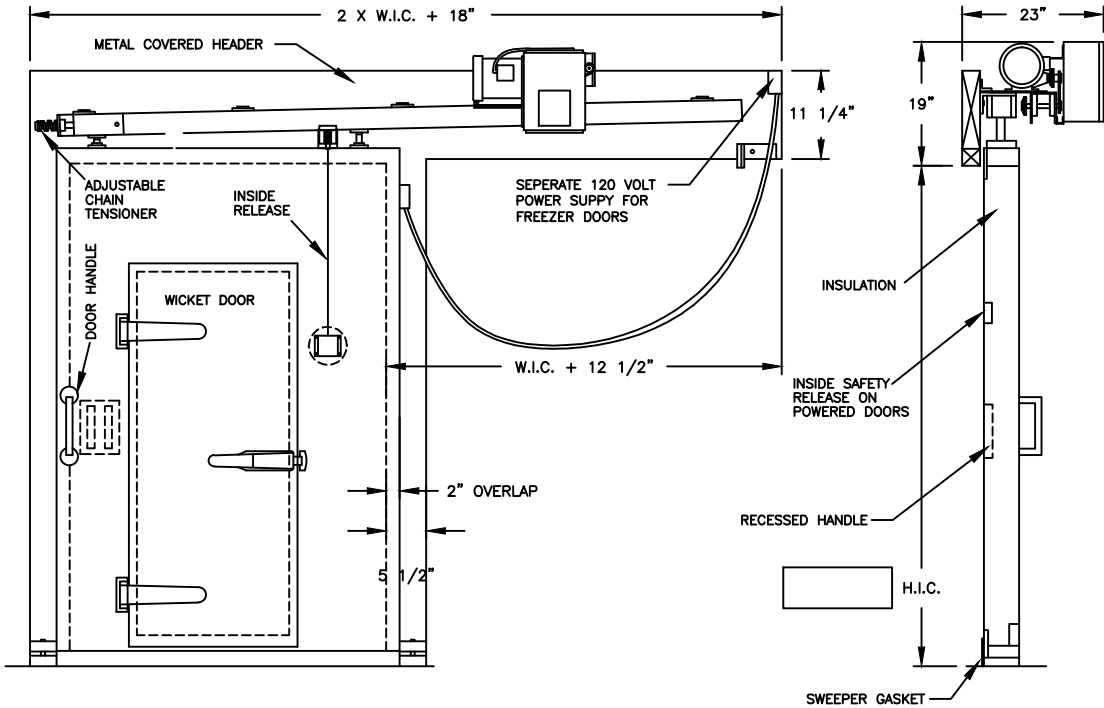


WEILAND POWER SINGLE HORIZONTAL SLIDING DOOR WITH WICKET

Customer & PO# _____

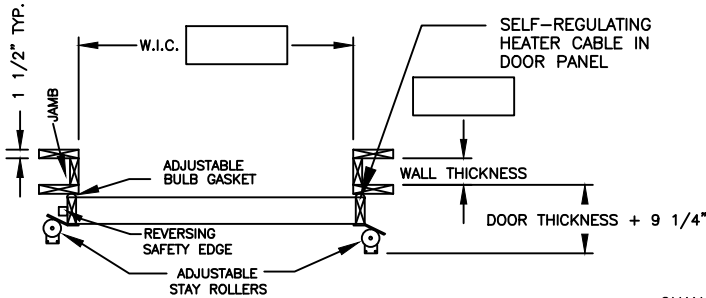


DOOR NO.	DOOR QUANTITY	DOOR SIZE:	W.I.C.	SLIDER	INFIT
			H.I.C.		

HORIZONTAL SLIDE: LEFT HAND (MIRROR IMAGE) RIGHT HAND (SHOWN)

INFIT SWING: LEFT HAND (MIRROR IMAGE) RIGHT HAND (SHOWN)

1. DOOR PANEL: F.I.P. POLYURETHANE INSULATION CORE
 - 3" Thick Door _____
 - 4" Thick Door _____
 - 5" Thick Door _____
 - 6" Thick Door _____
- COOLER FREEZER INDUSTRIAL
2. DOOR
 - MOLDED FIBERGLASS (WHITE) _____
 - WHITE STUCCO EMBOSSED GALV. _____
 - MILL FINISH GALV. _____
 - STAINLESS STEEL _____
3. DOOR CASEMENTS
 - WHITE STUCCO EMBOSSED GALV. _____
 - MILL FIN. GALV. _____
 - STAINLESS STEEL _____
4. DOOR TRIM
 - GALVANIZED STEEL _____
 - STAINLESS STEEL _____
5. OPTIONS
 - HEATER CABLE-FREEZER DOOR (4 SIDES) _____
 - JAMBS _____
 - JAMB DEPTH _____
 - INSIDE TRIM (1 1/2" x 5 1/2" STD.) _____
 - MIRRORED IMAGE HEADER _____
 - VERTICAL END SUPPORTS _____
 - KICK PLATE _____
 - GALVANIZED STEEL STAINLESS STEEL
 - STD. HEIGHT 12" 18" 24" 36"
 - ONE SIDE TWO SIDES
 - LOCKING DEVICE _____
 - VISION PANEL (12" x 18" x 1/2") _____
 - INSULATED GLASS POLYCARBONATE
 - HEATED
 - U.S.D.A. APPROVAL _____
6. POWER OPERATOR - 1/2HP,480V,3PHASE NEMA4
 - OPTIONS:
 - PULL CORD CONTROL _____
 - ONE SIDE BOTH SIDES HEATED
 - PUSH BUTTON CONTROL _____
 - RADIO CONTROLLED _____
 - PHOTO CELL OPEN CLOSE _____
 - PARTIAL OPENING CONTROL _____
 - CLOSING SIGNAL WARNING CONTROL _____
 - ELECTRIC INTERLOCK _____
 - HEATED CONTROL BOX _____
 - TIME DELAY CLOSE _____
 - LOOP DETECTOR SYSTEM _____



BUCK OPENING WITH JAMBS
W.I.C. + 4"
H.I.C. + 2"

BUCK OPENING WITHOUT JAMBS
W.I.C. + 0"
H.I.C. + 0"

CHANGES, REMARKS, ETC. _____

WEILAND POWER SINGLE HORIZONTAL SLIDE DOORS
 Include door panel, vertical casings and header covered with 26 ga. metal in any of several coverings which include white acrylic stucco embossed galvanized steel, mill finished galvanized steel, aluminum or stainless steel, F.I.P. polyurethane insulation core, adjustable bulb type neoprene gaskets, heavy duty hardware and track with corrosion resistant coatings, (2) two 4 wheel trolleys on each door panel, all exposed seams sealed, door track angled down and in for a tight seal, floor mounted stay rollers, and 120 volt self regulating heater cable in freezer doors, electric operator with 1/2 hp totally enclosed 3 phase electric motor with heavy duty gear drive and adjustable torque limiter, NEMA 4 control box, 24 volt control circuit and adjustable limit switches, unit is preassembled and mounted on header, full height instant reversing safety edge on leading edge of each door panel, emergency release manual disconnect, and (2) pull cord switches, each with 12 ft. of polypropylene pull cord.

Weiland

POWER SINGLE HORIZONTAL
SLIDE DOOR WITH WICKET

WEILAND INC.
55242 HIGHWAY 32
MADISON, NE 68748-6136
(402) 454-2106
www.weilanddoors.com

APPROVED BY _____

DATE _____