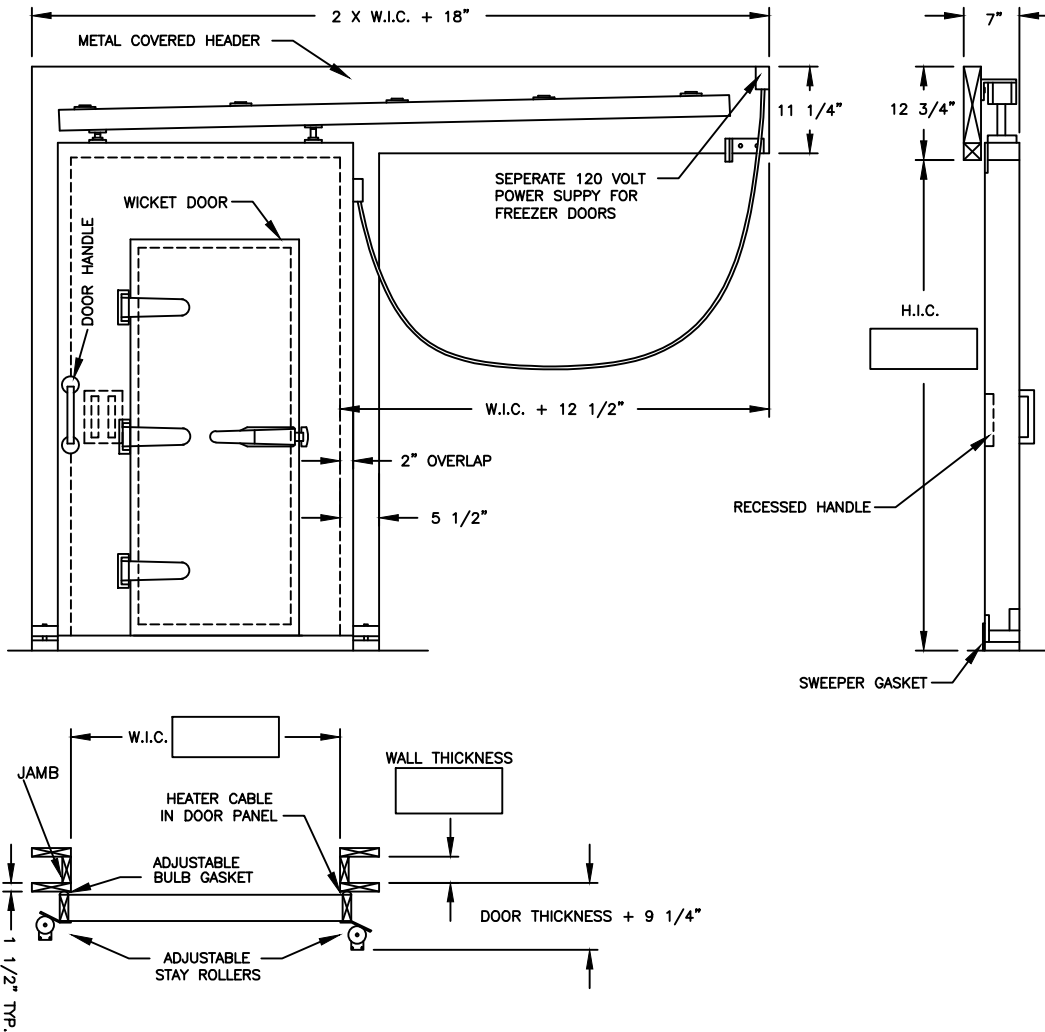


Customer & PO#

WEILAND MANUAL SINGLE HORIZONTAL SLIDING DOOR WITH WICKET



DOOR NO. DOOR QUANTITY DOOR SIZE: W.I.C. H.I.C.

HORIZONTAL SLIDE: LEFT HAND (MIRROR IMAGE) RIGHT HAND (SHOWN)

INFIT SWING: LEFT HAND (MIRROR IMAGE) RIGHT HAND (SHOWN)

1. DOOR PANEL: F.I.P. POLYURETHANE INSULATION CORE
- 3" Thick Door
 - 4" Thick Door
 - 5" Thick Door
 - 6" Thick Door

COOLER FREEZER INDUSTRIAL

2. DOOR
- MOLDED FIBERGLASS (WHITE)
 - WHITE STUCCO EMBOSSED GALV.
 - MILL FINISH GALV.
 - STAINLESS STEEL

3. DOOR CASEMENTS
- WHITE STUCCO EMBOSSED GALV.
 - MILL FIN. GALV.
 - STAINLESS STEEL

4. DOOR TRIM
- GALVANIZED STEEL
 - STAINLESS STEEL

5. OPTIONS
- A. HEATER CABLE-FREEZER DOOR (4 SIDES)
 - B. JAMBS
 - C. JAMB DEPTH
 - D. INSIDE TRIM (1 1/2" x 5 1/2" STD.)
 - E. MIRRORED IMAGE HEADER
 - F. VERTICAL END SUPPORTS
 - F. KICK PLATE
 - GALVANIZED STEEL STAINLESS STEEL
 - STD. HEIGHT 12" 18" 24" 36"
 - ONE SIDE TWO SIDES
 - G. LOCKING DEVICE
 - H. VISION PANEL (12" x 18" x 1/2")
 - INSULATED GLASS POLYCARBONATE
 - HEATED
 - I. U.S.D.A. APPROVAL

BUCK OPENING WITH JAMBS
W.I.C. + 4"
H.I.C. + 2"

BUCK OPENING WITHOUT JAMBS
W.I.C. + 0"
H.I.C. + 0"

WEILAND MANUAL SINGLE HORIZONTAL SLIDE DOORS
Include door panel, vertical casings and header covered with 26 ga. metal in any of several coverings which include white acrylic stucco embossed galvanized steel, mill finished galvanized steel, aluminum, and stainless steel. F.I.P. polyurethane insulation core, adjustable bulb type neoprene gaskets, heavy duty hardware and track with corrosion resistant coatings, (2) two 4 wheel trolleys on each door panel, all exposed seams sealed, door track angled down and in for a tight seal, floor mounted stay rollers, and 120 volt self regulating heater cable in freezer doors.

CHANGES, REMARKS, ETC. _____

APPROVED BY _____

DATE _____

Weiland
MANUAL SINGLE HORIZONTAL SLIDE DOOR WITH WICKET

WEILAND INC.
55242 HIGHWAY 32
MADISON, NE 68748-6136
(402) 454-2106
www.weilanddoors.com