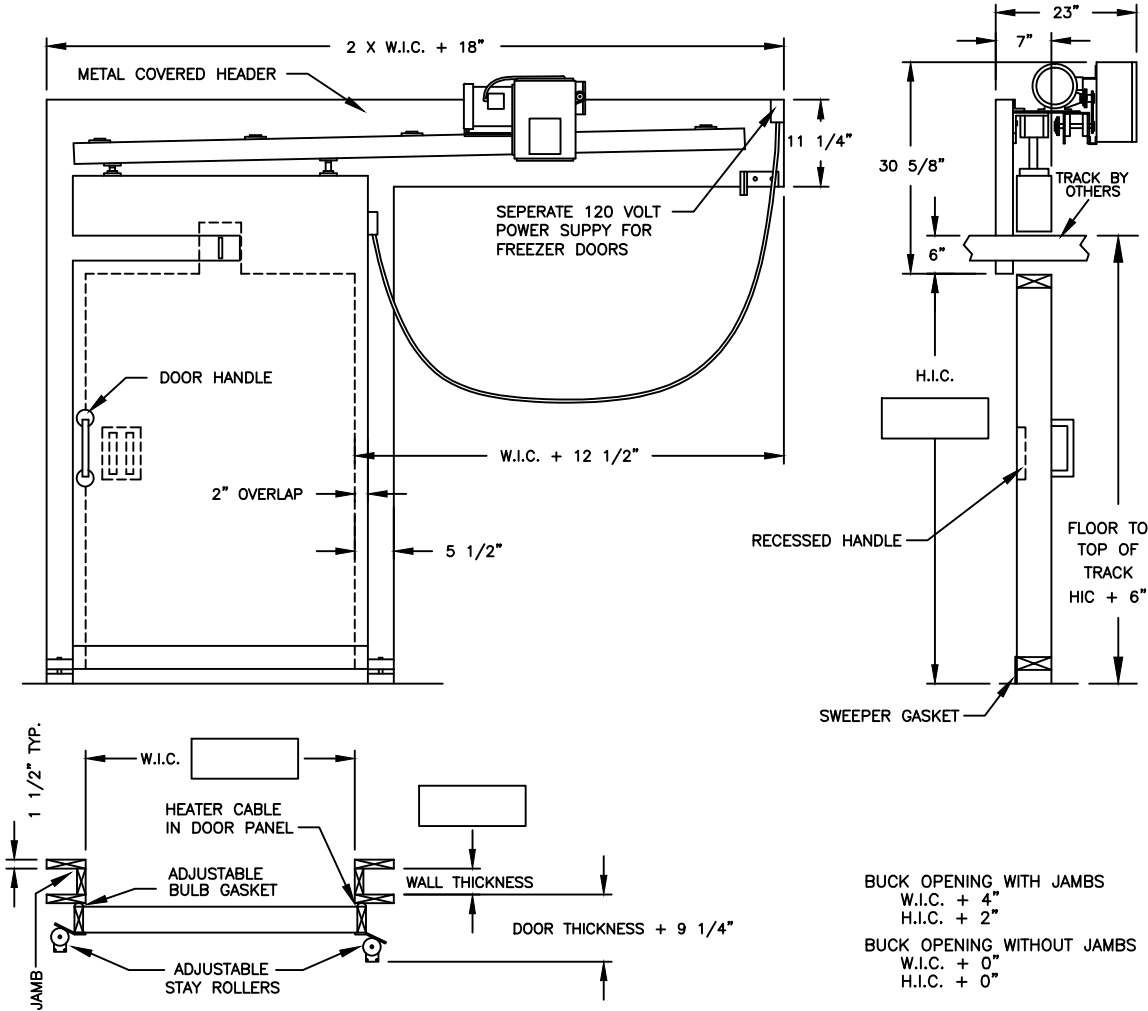


WEILAND POWER HORIZONTAL TRACK DOOR

ENTER CUSTOMER and PO#



W.I.C.

DOOR NO. DOOR QUANTITY DOOR SIZE: H.I.C.
TOP-OF-RAIL

SLIDE: LEFT HAND (MIRROR IMAGE) RIGHT HAND (SHOWN)

1. DOOR PANEL: F.I.P. POLYURETHANE INSULATION CORE
 - 3" Thick Door
 - 4" Thick Door
 - 5" Thick Door
 - 6" Thick Door
- COOLER FREEZER INDUSTRIAL
2. DOOR
 - MOLDED FIBERGLASS (WHITE)
 - WHITE STUCCO EMBOSSED GALV.
 - MILL FINISH GALV.
 - STAINLESS STEEL
3. DOOR CASEMENTS
 - WHITE STUCCO EMBOSSED GALV.
 - MILL FIN. GALV.
 - STAINLESS STEEL
4. DOOR TRIM
 - GALVANIZED STEEL
 - STAINLESS STEEL
5. OPTIONS
 - HEATER CABLE-FREEZER DOOR (4 SIDES)
 - JAMBS
 - JAMB DEPTH
 - INSIDE TRIM (1 1/2" x 5 1/2" STD.)
 - MIRRORED IMAGE HEADER
 - VERTICAL END SUPPORTS
 - KICK PLATE
 - GALVANIZED STEEL STAINLESS STEEL
 - STD. HEIGHT 12" 18" 24" 36"
 - ONE SIDE TWO SIDES
 - LOCKING DEVICE
 - VISION PANEL (12" x 18" x 1/2")
 - INSULATED GLASS POLYCARBONATE
 - HEATED
 - U.S.D.A. APPROVAL
6. POWER OPERATOR - 1/2HP,480V,3PHASE NEMA4
 - OPTIONS:
 - PULL CORD CONTROL
 - ONE SIDE BOTH SIDES HEATED
 - PUSH BUTTON CONTROL
 - RADIO CONTROLLED
 - PHOTO CELL OPEN CLOSE
 - PARTIAL OPENING CONTROL
 - CLOSING SIGNAL WARNING CONTROL
 - ELECTRIC INTERLOCK
 - HEATED CONTROL BOX
 - TIME DELAY CLOSE
 - LOOP DETECTOR SYSTEM

BUCK OPENING WITH JAMBS

W.I.C. + 4"
H.I.C. + 2"

BUCK OPENING WITHOUT JAMBS

W.I.C. + 0"
H.I.C. + 0"

WEILAND POWER SINGLE HORIZONTAL SLIDE DOORS

Include door panel, vertical casings and header covered with 26 ga. metal in any of several coverings which include white acrylic stucco embossed galvanized steel, mill finished galvanized steel, aluminum or stainless steel. F.I.P. polyurethane insulation core, adjustable bulb type neoprene gaskets, heavy duty hardware and track with corrosion resistant coatings, (2) two 4 wheel trolleys on each door panel, all exposed seams sealed, door track angled down and in for a tight seal, floor mounted stay rollers, and 120 volt self regulating heater cable in freezer doors, electric operator with 1/2 hp totally enclosed 3 phase electric motor with heavy duty gear drive and adjustable torque limiter, NEMA 4 control box, 24 volt control circuit and adjustable limit switches, unit is preassembled and mounted on header. Full height instant reversing safety edge on leading edge of each door panel, emergency release manual disconnect, and (2) pull cord switches, each with 12 ft. of polypropylene pull cord.

CHANGES, REMARKS, ETC.

APPROVED BY _____

DATE _____

Weiland
POWER SINGLE HORIZONTAL
SLIDE TRACK DOOR
WEILAND INC.
55242 HIGHWAY 32
MADISON, NE 68748-6136
(402) 454-2106
www.weilanddoors.com