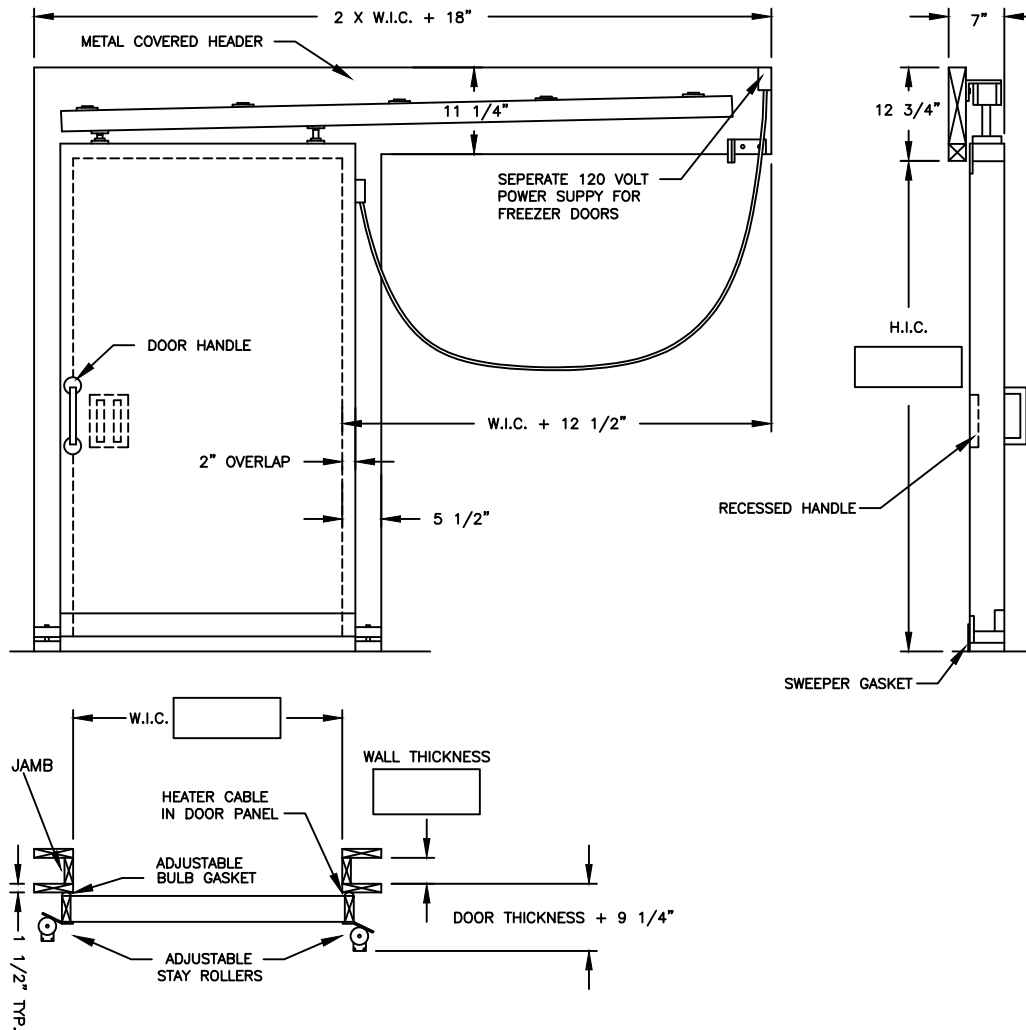


Customer & PO#

WEILAND MANUAL SINGLE HORIZONTAL SLIDING DOOR



DOOR NO. DOOR QUANTITY DOOR SIZE: W.I.C.
 H.I.C.

SLIDE: LEFT HAND (MIRROR IMAGE) RIGHT HAND (SHOWN)

1. DOOR PANEL: F.I.P. POLYURETHANE INSULATION CORE
 - 3" Thick Door
 - 4" Thick Door
 - 5" Thick Door
 - 6" Thick Door

COOLER FREEZER INDUSTRIAL

2. DOOR
 A. MOLDED FIBERGLASS (WHITE)
 B. WHITE STUCCO EMBOSSED GALV.
 C. MILL FINISH GALV.
 D. STAINLESS STEEL

3. DOOR CASEMENTS
 A. WHITE STUCCO EMBOSSED GALV.
 B. MILL FIN. GALV.
 C. STAINLESS STEEL

4. DOOR TRIM
 A. GALVANIZED STEEL
 B. STAINLESS STEEL

5. OPTIONS
 A. HEATER CABLE-FREEZER DOOR (4 SIDES)
 B. JAMBS
 C. JAMB DEPTH
 D. INSIDE TRIM (1 1/2" X 5 1/2" STD.)
 E. MIRRORED IMAGE HEADER
 F. VERTICAL END SUPPORTS
 G. KICK PLATE
 GALVANIZED STEEL STAINLESS STEEL
 STD. HEIGHT 12" 18" 24" 36"
 ONE SIDE TWO SIDES
 H. LOCKING DEVICE
 I. VISION PANEL (12" x 18" x 1/2")
 INSULATED GLASS POLYCARBONATE
 HEATED
 J. U.S.D.A. APPROVAL

CHANGES, REMARKS, ETC. _____

BUCK OPENING WITH JAMBS
 W.I.C. + 4"
 H.I.C. + 2"
 BUCK OPENING WITHOUT JAMBS
 W.I.C. + 0"
 H.I.C. + 0"

WEILAND MANUAL SINGLE HORIZONTAL SLIDE DOORS include door panel, vertical casings and header covered with 26 ga. metal in any of several coverings which include white acrylic stucco embossed galvanized steel, mill finished galvanized steel, aluminum, and stainless steel. F.I.P. polyurethane insulation core, adjustable bulb type neoprene gaskets, heavy duty hardware and track with corrosion resistant coatings, (2) two 4 wheel trolleys on each door panel, all exposed seams sealed, door track angled down and in for a tight seal, floor mounted stay rollers, and 120 volt self regulating heater cable in freezer doors.

APPROVED BY _____

DATE _____

Weiland
 MANUAL SINGLE HORIZONTAL
 SLIDE DOOR
 WEILAND INC.
 55242 HIGHWAY 32
 MADISON, NE 68748-6136
 (402) 454-2106
 www.weilanddoors.com