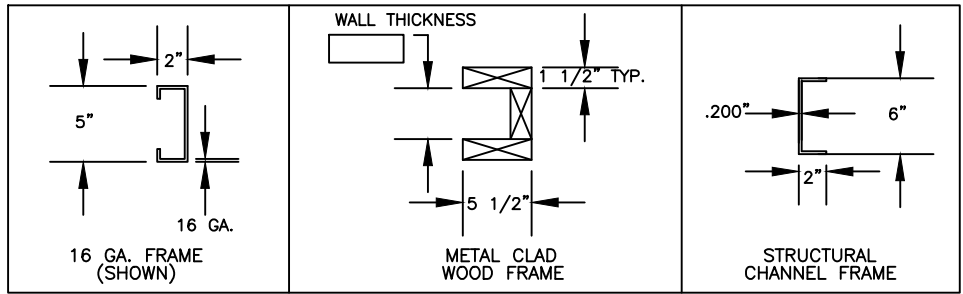
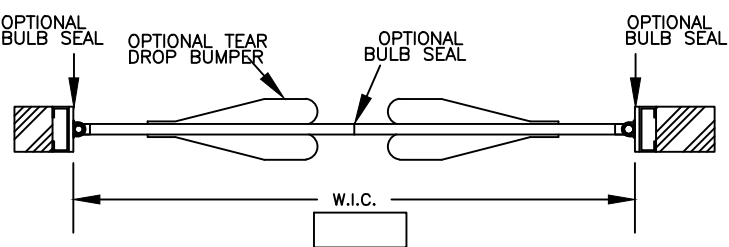
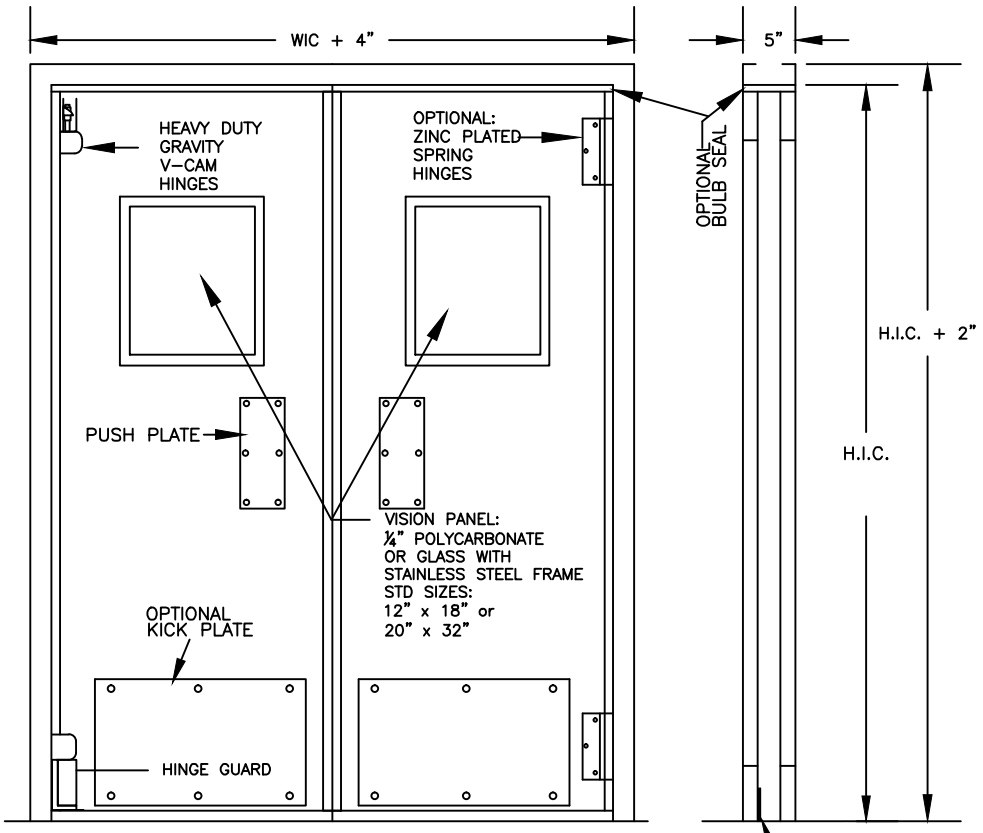


Customer & PO#



## WEILAND FIBERGLASS DOUBLE ACTING DOUBLE DOOR

DOOR NO.  DOOR QUANTITY  DOOR SIZE: W.I.C.   
 H.I.C.

1. DOOR PANEL YES 
  - A. 1 3/4" MOLDED FIBERGLASS INSULATED STANDARD 
    - WHITE  OPTIONAL COLOR \_\_\_\_\_
2. DOOR FRAMES BOTH PANELS 
  - A. 16 GA. FRAME \_\_\_\_\_ 
    - STAINLESS STEEL \_\_\_\_\_
    - PRIME PAINTED GALVANIZED STEEL \_\_\_\_\_
    - 5" FRAME DEPTH STANDARD \_\_\_\_\_
    - OPTIONAL FRAME DEPTH INCHES \_\_\_\_\_
  - B. METAL CLAD WOOD FRAME FOR FOAM PANEL WALLS 
    - WALL THICKNESS? INCHES \_\_\_\_\_
    - WHITE STUCCO EMB. STEEL
    - MILL FINISHED GALV.
    - STAINLESS STEEL
  - C. 6" GALVANIZED STRUCTURAL STEEL CHANNEL FRAME
3. OPTIONS BOTH PANELS 
  - A. HEAVY DUTY SPRING HINGES (ZINC PLATED) \_\_\_\_\_
  - B. STANDARD DUTY SPRING HINGES (ZINC PLATED) \_\_\_\_\_
  - C. STAINLESS STEEL PUSH PLATES BOTH SIDES \_\_\_\_\_
  - D. TEAR DROP PLASTIC IMPACT BUMPERS BOTH SIDES  
    - STD. HEIGHT 18"  24"  36"
  - E. KICK PLATE BOTH SIDES \_\_\_\_\_  
    - GALVANIZED STEEL  STAINLESS STEEL
    - STD. HEIGHT 18"  24"  36"
  - F. THRESHOLD \_\_\_\_\_
  - G. PERIMETER SEAL \_\_\_\_\_
  - H. BOTTOM SWEEP SEAL \_\_\_\_\_
  - I. VISION PANEL \_\_\_\_\_  
    - 12" X 18"  20" X 32"  Other
    - POLYCARBONATE  INSULATED GLASS
  - J. STAINLESS STEEL EDGE PROTECTION CHANNEL \_\_\_\_\_
  - K. U.S.D.A. APPROVAL \_\_\_\_\_

CHANGES, REMARKS, ETC. \_\_\_\_\_

**Weiland**

WEILAND DOUBLE ACTING  
DOUBLE DOOR

WEILAND INC.  
55242 HIGHWAY 32  
MADISON, NE 68748-6136  
(402) 454-2106  
www.weilanddoors.com

APPROVED BY \_\_\_\_\_ DATE \_\_\_\_\_