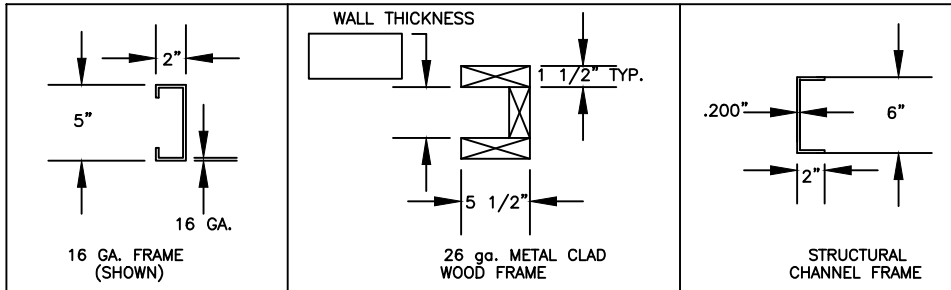
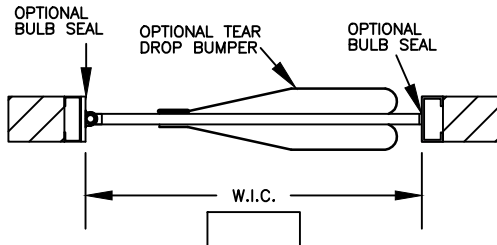
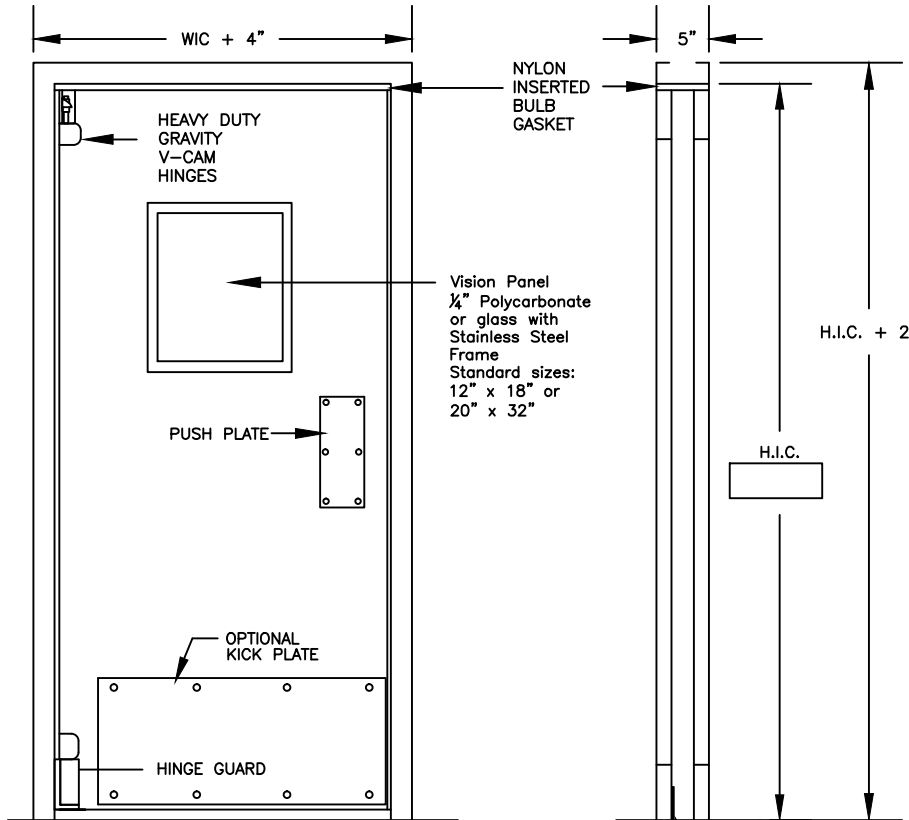


Customer & PO#



# WEILAND FIBERGLASS DOUBLE ACTING DOOR

DOOR NO.  DOOR QUANTITY  DOOR SIZE: W.I.C.   
  LH RH  H.I.C.   
 Handing

1. DOOR PANEL YES 
  - A. 1 3/4" MOLDED FIBERGLASS INSULATED STANDARD
  - WHITE  OPTIONAL COLOR \_\_\_\_\_
2. DOOR FRAMES
  - A. 16 GA. FRAME \_\_\_\_\_
  - STAINLESS STEEL \_\_\_\_\_
  - PRIME PAINTED GALVANIZED STEEL \_\_\_\_\_
  - 5" FRAME DEPTH STANDARD \_\_\_\_\_
  - OPTIONAL FRAME DEPTH INCHES \_\_\_\_\_
  - B. METAL CLAD WOOD FRAME FOR FOAM PANEL WALLS
  - WALL THICKNESS? INCHES \_\_\_\_\_
  - WHITE STUCCO EMB. STEEL
  - MILL FINISHED GALV.
  - STAINLESS STEEL
  - C. 6" GALVANIZED STRUCTURAL STEEL CHANNEL FRAME
3. OPTIONS
  - A. HEAVY DUTY SPRING HINGES (ZINC PLATED) \_\_\_\_\_
  - B. STANDARD DUTY SPRING HINGES (ZINC PLATED) \_\_\_\_\_
  - C. S/S CAM RISE HINGES \_\_\_\_\_
  - D. STAINLESS STEEL PUSH PLATES BOTH SIDES \_\_\_\_\_
  - E. TEAR DROP PLASTIC IMPACT BUMPERS BOTH SIDES
  - STD. HEIGHT 18"  24"  36"
  - F. KICK PLATE BOTH SIDES \_\_\_\_\_
  - GALVANIZED STEEL  STAINLESS STEEL
  - STD. HEIGHT 18"  24"  36"
  - F. THRESHOLD \_\_\_\_\_
  - G. PERIMETER SEAL \_\_\_\_\_
  - H. BOTTOM SWEEP SEAL \_\_\_\_\_
  - I. VISION PANEL \_\_\_\_\_
  - 12" X 18"  20" X 32"  Other
  - POLYCARBONATE  INSULATED GLASS
  - J. STAINLESS STEEL EDGE PROTECTION CHANNEL \_\_\_\_\_
  - K. U.S.D.A. APPROVAL \_\_\_\_\_

CHANGES, REMARKS, ETC. \_\_\_\_\_

APPROVED BY \_\_\_\_\_

DATE \_\_\_\_\_

**Weiland**  
 WEILAND DOUBLE ACTING DOOR

WEILAND INC.  
 55242 HIGHWAY 32  
 MADISON, NE 68748-6136  
 (402) 454-2106  
 www.weilanddoors.com